

## Wodan

### Backhoe dredger



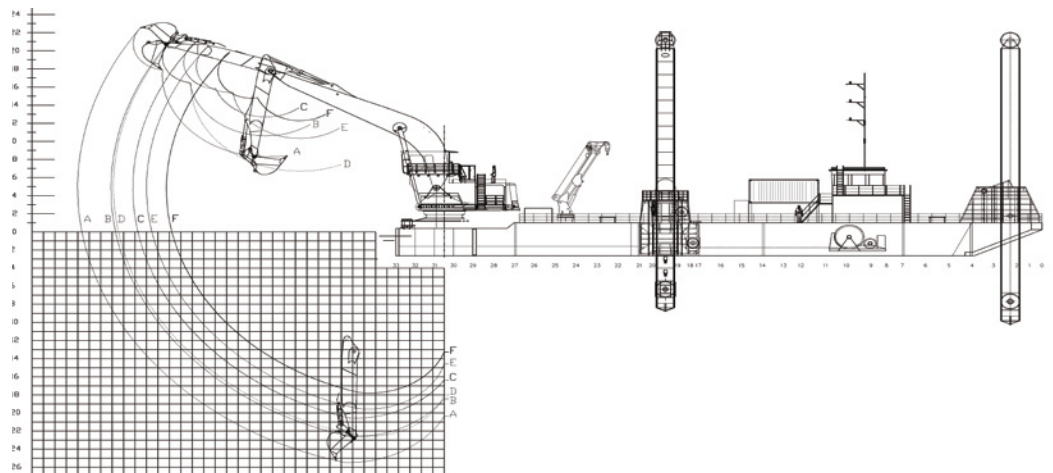
#### Main data

Built by	Corn Island Shipyard - USA
Year of construction/modification	2004
Classification	ABS I HULL Dredger no propulsion. Unrestricted navigation. Dredging within 15 miles from the shore, or 20 miles from port.
Gross tonnage	901
Length overall	56.38 m
Breadth	17.37 m
Moulded depth	3.66 m
Normal draught	1.65 m
Type of excavator	Liebherr P995
Bucket capacity mud bucket	16 m <sup>3</sup>
Bucket capacity H.D. bucket	9.5 m <sup>3</sup>
Maximum dredging depth	23 m
Total installed power	3,750 kW
Excavator engine power	1,600 kW

# Wodan

## Backhoe dredger

Side view



Top view deck level

